



Boughton Lane, Loose, Maidstone, Kent, ME15 9QN
Guide Price £475,000 to £500,000

****GUIDE PRICE £475,000 TO £500,000****FABULOUS THREE BEDROOM HOME WITH OPEN PLAN KITCHEN/DINER SITUATED IN THE SOUGHT AFTER LOOSE VILLAGE WITHIN WALKING DISTANCE OF LOCAL AMENITIES

This striking home offers generous proportions and features a fantastic entrance hall with a unique glass frontage, a spacious lounge, and a stunning open-plan kitchen/diner with kitchen island, granite worktops and double ovens. A bright conservatory opens onto beautifully landscaped gardens, while a useful ground floor cloakroom and internal access to the garage with utility area add practicality.

Upstairs, there are three generous bedrooms and a modern family bathroom. Outside, a large resin driveway provides parking for several vehicles, and the rear garden offers a perfect space for entertaining, with a patio, neatly kept lawns, and well-stocked borders. A superb summer house, currently used as a games room, also offers excellent potential as a home office.

Located in the highly sought-after village of Loose, the property is within easy reach of Loose Primary School, a well-regarded local school, as well as the Maidstone Grammar Schools. The area is known for its picturesque countryside walks, friendly community, and convenient access to Maidstone town centre and transport links.

Viewing is highly recommended. Call Page and Wells Loose Office today and book your viewing to avoid missing out



GROUND FLOOR

Entrance Hall

Lounge 16'5" x 12'5" (5.01m x 3.81m)

Kitchen/Dining Area 28'0" x 11'7" (8.54m x 3.54m)

Conservatory 14'1" x 8'4" (4.31m x 2.55m)

FIRST FLOOR

Bedroom 1 13'5" x 10'11" (4.09m x 3.35m)

Bedroom 2 11'1" x 10'11" (3.40m x 3.35m)

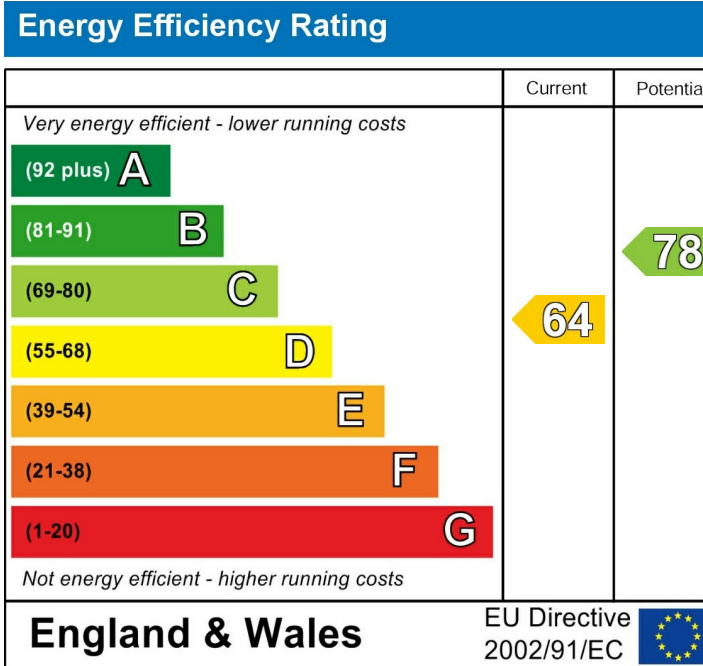
Bedroom 3 8'2" x 7'8" (2.50m x 2.35m)

Family Bathroom

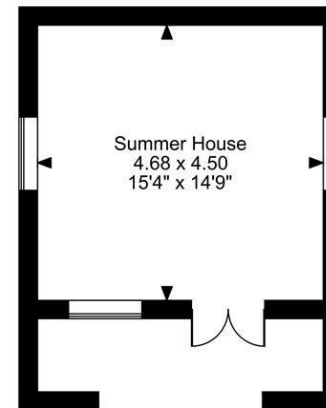
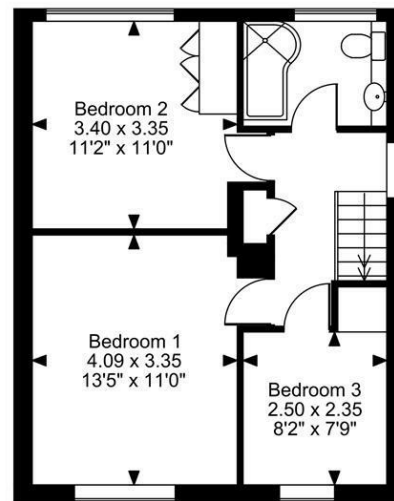
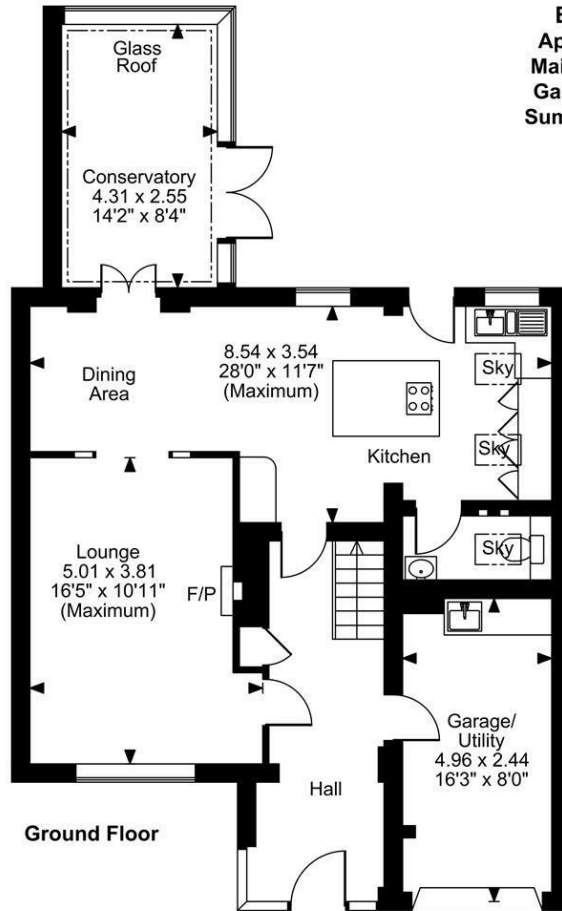
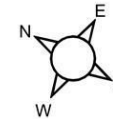
EXTERNALLY

Garage 16'3" x 8'0" (4.96m x 2.44m)

Summer House 15'4" x 14'9" (4.68m x 4.50m)



Boughton Lane, Maidstone
Approximate Gross Internal Area
Main House = 1250 Sq Ft/116 Sq M
Garage/Utility = 128 Sq Ft/12 Sq M
Summer House = 227 Sq Ft/21 Sq M
Total = 1605 Sq Ft/149 Sq M



FOR ILLUSTRATIVE PURPOSES ONLY - NOT TO SCALE

The position & size of doors, windows, appliances and other features are approximate only.

© ehouse. Unauthorised reproduction prohibited. Drawing ref. dig/8643577/LCO

